



Soft Weft **Plank**



SWT240705 COTTON



SWT240706 LIGHTNING



SWT240707 FOG



SWT240708 SHADOW



SWT240705 + SWT240708

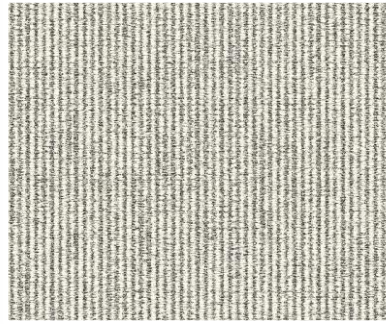


SWT240705 + SWT240707 + SWT240708

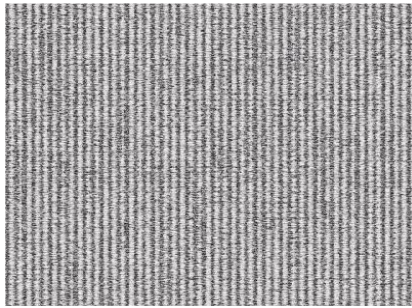




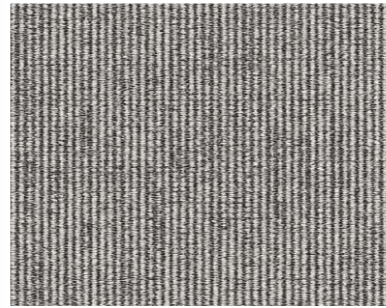
SWT240705 COTTON



SWT240706 LIGHTNING



SWT240707 FOG



SWT240708 SHADOW

Product Specifications

| | |
|-------------------|--------------------------|
| Style Name | Soft Weft Plank |
| Size | 25cm x 100cm |
| Construction | Multi-Level Pattern Loop |
| Yarn | 100% Nylon 6,0 |
| Dye Method | 100% Solution Dyed |
| Gauge | 1/12" |
| Production Weight | 21 oz psy |
| Total Thickness | 6.00mm |
| Secondary Backing | ComfortBac v2 |
| Packing | 20pcs/carton |

Performance Specifications

| | |
|--|--|
| Radiant Panel | ASTM E648 Class 1 |
| Smoke Density | ASTM E662 <450 |
| Static Propensity | AATCC 134 <3.5KV |
| Color Fastness to Light | AATCC 16E ≥4 |
| Color Fastness to Rubbing/ Crocking | AATCC 165 ≥4 |
| Dimensional Stability | AACHEN ≤0.2% |
| Foot Traffic | |
| Recommendation: | Heavy Commercial |
| Antimicrobial | Health Guard |
| Certificates | Singapore Green Label Certification Singapore Green Building Product Certification (4 ticks) |

INSTALLATION METHODS



Herringbone



Ashlar



Brick



039-017-2094
Environmentally
Preferred Carpet





SMJ furnishings (s) pte ltd
31 Jurong Port Road
Jurong Logistics Hub #02-20
Singapore 619115
+65.62611212
www.smjf.com.sg



@smjcarpet



smj_flooring

Your Trusted Flooring Specialist

